

## Aboriginal Heritage

Protecting Aboriginal heritage is a key priority for the quarry industry.

Investigations are conducted to identify any traditional artefacts and preserve cultural heritage on quarry sites.



## Rehabilitation

Once a quarry reserve is exhausted it is rehabilitated.

In Victoria old quarries have been turned into:

- Parks • Farmland • Natural bush
- Water reservoirs & billabongs • Residential developments • Shopping centres (eg: Highpoint SC and Fitzroy Gardens)



## Recycling of Construction Materials

“Many construction materials are recyclable. Often quarries combine recycled materials with virgin stone to reduce carbon emissions by up to 65%. This also reduces landfill and can lower construction costs significantly.”



## About the CMPA

The Construction Material Processors Association (CMPA) is dedicated to the representation and service of its Members in the Victorian Earth Resources Industry.

Since inception the CMPA has been successful in working with industry, government and communities to progress the Victorian Earth Resources Industry.



**Phone:** 03 5781 0655  
**Email:** [enquiries@cmpavic.asn.au](mailto:enquiries@cmpavic.asn.au)  
**Address:** 2/15 Anvil Avenue, Kilmore VIC 3764  
**Website:** [www.quarriesbuildingcommunities.com](http://www.quarriesbuildingcommunities.com)



# QUARRIES BUILDING COMMUNITIES



## Why Do We Need Quarries?

Quarries produce stone, clay, gravel and sand – essential raw materials for construction.

Without quarries there would be no construction materials to build our homes, schools, offices, factories, shops, dams, hospitals, roads and railways.



## Helping the Economy

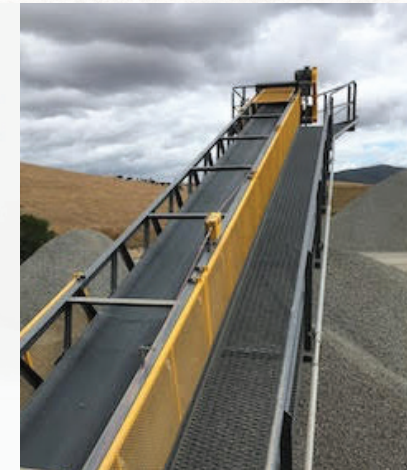
Quarries provide local jobs and help build a stronger economy.



## Quarries are Highly Regulated

Quarries are controlled by many detailed planning, safety and environmental regulations. Operating hours are limited and noise and dust restrictions enforced.

Safety regulations are in place to ensure quarry employees stay safe while at work.



**“Over 200 million tonnes of stone is used in construction in Australia every year.”**

**“In Australia, the quarry industry employs 12,000 people directly, supports another 40,000 indirectly and underpins the 1.3 million construction workers across the nation.”**

## Protecting the Environment

Quarry operators must preserve native vegetation, habitat, water resources and wildlife. Each quarry must have a wide buffer zone area as well as vegetation plantings and offsets.

Water is managed using natural collection, settlement and filtration methods. Water quality monitoring and recycling is standard practice.

**Having quarries nearby means less traffic, lower**

**carbon emissions & reduced construction costs.**

